

germantown innovation center

20271 Goldenrod Lane | Germantown, MD 20876 | (301) 528-4001

With easy access to I-270, the GIC is the county's premier space for life sciences companies featuring wet labs and in partnership with Montgomery College's state-of-the art biotech facilities.



FEATURES

- 32,000 square feet
- 45 offices
- 12 wet labs, averaging 500 square feet (Class 100) for life sciences companies
- 2 huddle areas
- 2 conference rooms
- 1 large multi-purpose room, seating 80-100 people
- Green-design elements, including
 - Lab floors mostly made of rapidly renewable materials
 - Efficient mechanical systems
- Community of like-minded entrepreneurs

OUR AWARD-WINNING INCUBATOR PROGRAM IS NATIONALLY RECOGNIZED. ALL NETWORK FACILITIES ARE CONVENIENTLY LOCATED IN CLOSE PROXIMITY TO STRATEGIC BUSINESS ASSETS—FEDERAL AGENCIES, METRO STATIONS, CORE INDUSTRY PARTNERS, VIBRANT RETAIL/RESIDENTIAL TOWN CENTERS AND MAJOR TRAVEL ROUTES.

Each Facility Features:

- Turnkey office space, one with fully fitted wet labs, including ROI water, emergency power and fume hoods (GIC)
- Shared conference rooms with state-of-the-art audio visual systems, pre-wired offices to accommodate both telephone and broadband internet services and wireless internet access
- A Tenant Services Coordinator at the front desk
- Shared office equipment including copy, fax, scan, print and mail delivery
- Shared kitchenette / lunch room with coffee and other hot gourmet beverages, refrigerator, microwave and vending machines
- A full menu of resource and support services, including business, legal, IP, and accounting, plus access to state and county funding programs to help develop a successful business venture
- Free "lunch and learn" business educational sessions for you and your staff
- No long term lease obligations. Facilities offer flexible one year lease agreements with 60-day notice terms available.

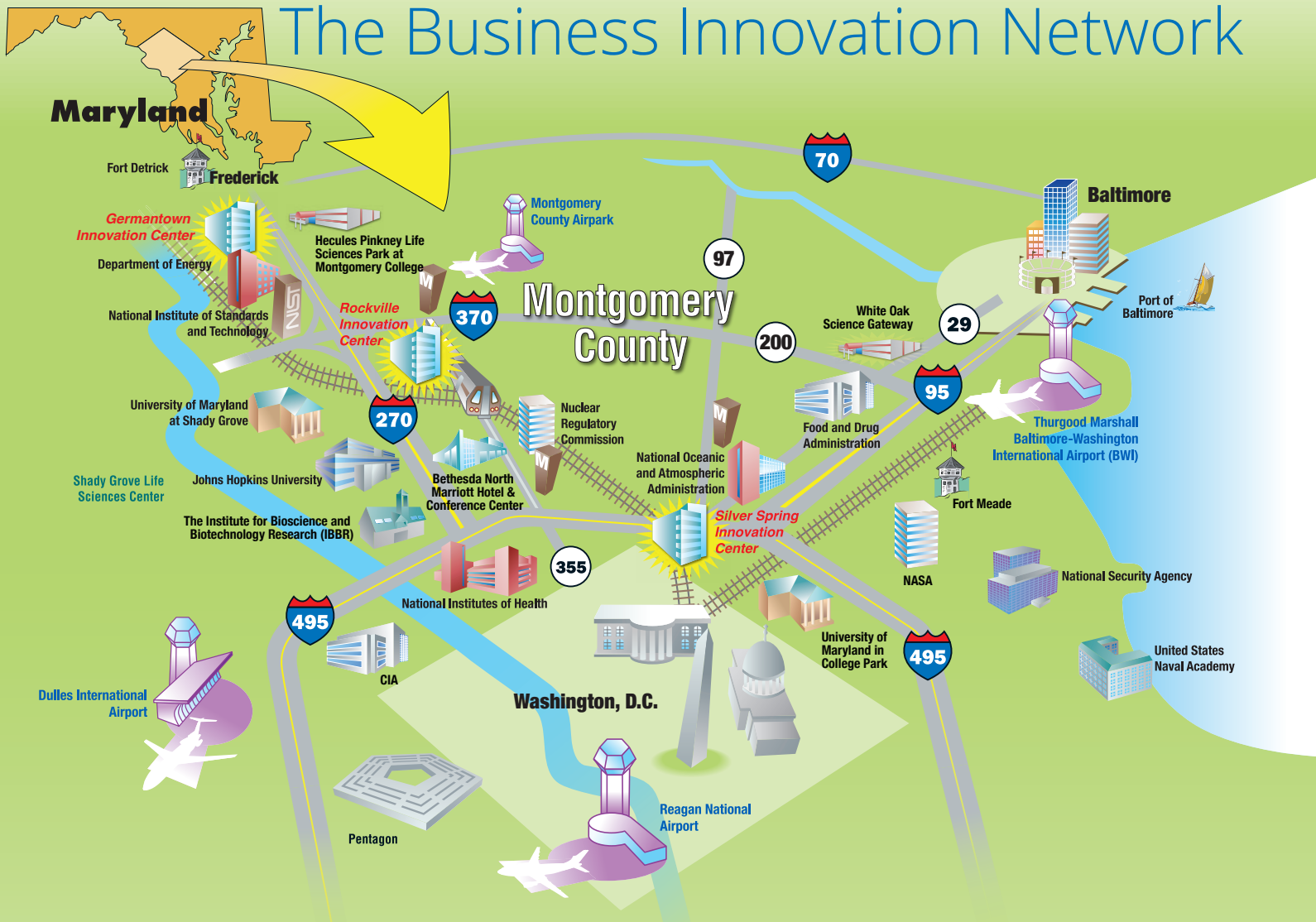
A Proven Record of Success

The National Business Incubator Association estimates that, while four out of five new businesses fail within the first five years, 80 percent of those cultivated in an incubator remain in business. Firms located in the Montgomery County Business Innovation Network have an excellent track record. Since 1999, hundreds of companies have graduated adding thousands of jobs to the local economy. Our members have also won Maryland Incubator of the Year awards, received venture capital, been acquired by Fortune 500 companies, purchased office space and earned SBIR grants and other government funding. *Why don't you consider joining our growing community of entrepreneurs?*

DON'T NEED PHYSICAL OFFICE SPACE? ASK ABOUT OUR VIRTUAL INCUBATOR MEMBERSHIP!

You'll get all the support services and a mailbox without the four walls.

The Business Innovation Network



OUR AWARD-WINNING INCUBATOR PROGRAM IS NATIONALLY RECOGNIZED. ALL NETWORK FACILITIES ARE CONVENIENTLY LOCATED IN CLOSE PROXIMITY TO STRATEGIC BUSINESS ASSETS—FEDERAL AGENCIES, METRO STATIONS, CORE INDUSTRY PARTNERS, VIBRANT RETAIL/RESIDENTIAL TOWN CENTERS AND MAJOR TRAVEL ROUTES.

In Montgomery County, Maryland, businesses succeed, companies make all the right connections, and employees prosper and enjoy an excellent quality of living. We offer high quality office space, an expansive infrastructure, a skilled workforce, and access to private and federal decision-makers.

With 18 Federal agencies and installations, Montgomery County provides businesses a rich research community where ideas are born and exchanged, and access to policy, regulatory, and procurement officials.

Our extensive transportation network provides your company with access to customers, workers and distribution ports. Our community has excellent road, rail and air transportation networks, as well as one of the nation's most robust public transit systems.

Knowledge-based businesses, with a high concentration in research and development as well as government contracting, drive Montgomery County's economy. Leading industry clusters such as life sciences with over 300 companies, cyber security, information technology, and healthcare benefit from a highly educated workforce and the contracting and research opportunities with the U.S. government.

From vibrant, urban commercial centers like Bethesda to tight-knit rural towns like Poolesville, Montgomery County offers a community to suit every business, every worker, and every lifestyle. Montgomery County has it all!

For more information about the Business Innovation Network or to apply for admittance into one of the network's incubators visit mcinnovationnetwork.com.